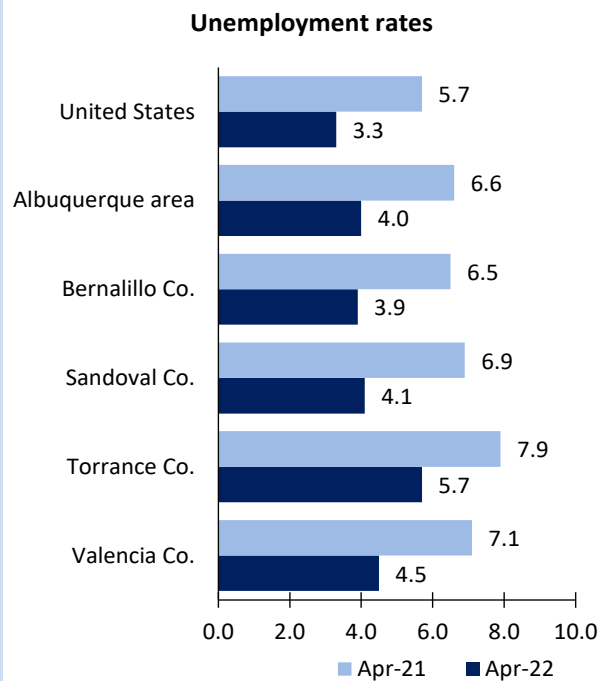


# Albuquerque Area Economic Summary

Updated June 01, 2022

This summary presents a sampling of economic information for the area; supplemental data are provided for regions and the nation. Subjects include **unemployment, employment, wages, prices, spending, and benefits**. All data are not seasonally adjusted and some may be subject to revision. Area definitions may differ by subject. For more area summaries and geographic definitions, see [www.bls.gov/regions/economic-summaries.htm](http://www.bls.gov/regions/economic-summaries.htm).

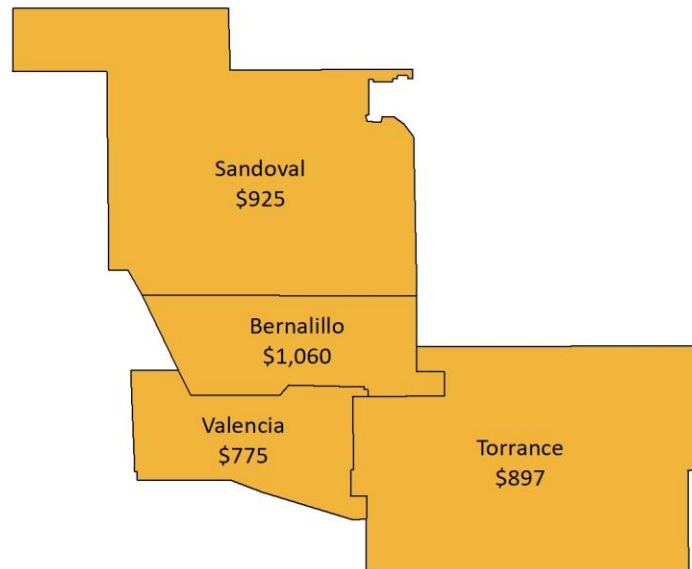
## Unemployment rates for the nation and selected areas



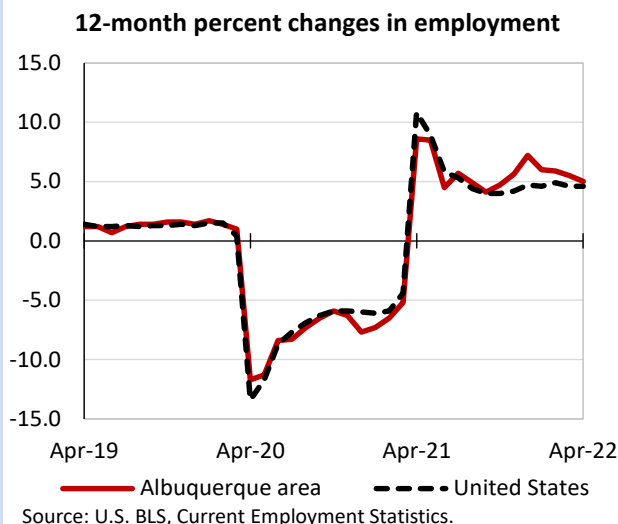
## Average weekly wages for all industries by county

Albuquerque area, third quarter 2021

(U.S. = \$1,251; Area = \$1,036)



## Over-the-year changes in employment on nonfarm payrolls and employment by major industry sector



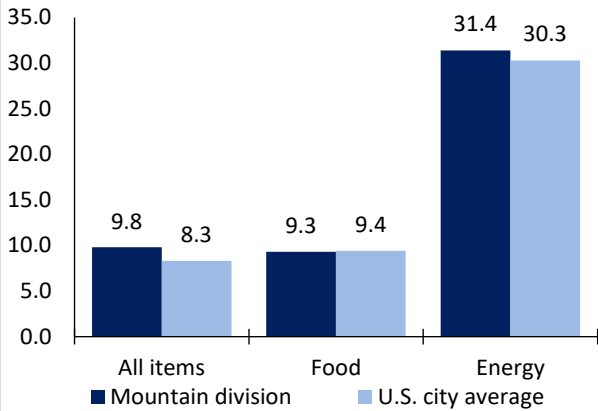
Albuquerque area employment (number in thousands)	Apr. 2022	Change from Apr. 2021 to Apr. 2022	
		Number	Percent
Total nonfarm	401.3	19.2	5.0
Mining, logging, and construction	27.8	2.7	10.8
Manufacturing	17.0	0.9	5.6
Trade, transportation, and utilities	66.0	4.3	7.0
Information	5.4	0.4	8.0
Financial activities	19.2	0.3	1.6
Professional and business services	62.8	-0.2	-0.3
Education and health services	67.3	0.9	1.4
Leisure and hospitality	43.4	7.5	20.9
Other services	11.4	0.6	5.6
Government	81.0	1.8	2.3

Source: U.S. BLS, Current Employment Statistics.



Over-the-year change in the prices paid by urban consumers for selected categories

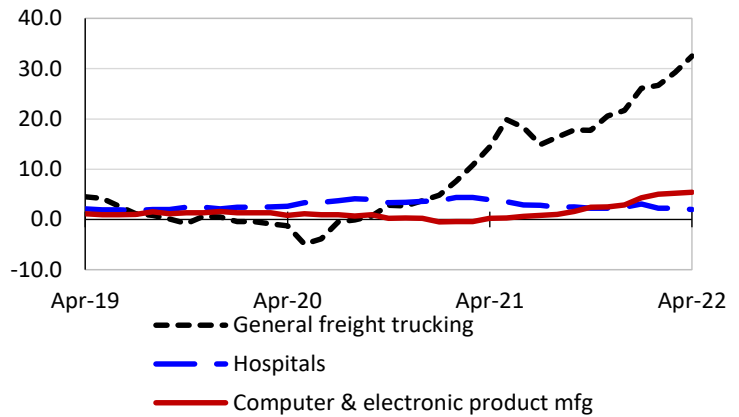
12-month percent change in CPI-U, April 2022



Source: U.S. BLS, Consumer Price Index.

Over-the-year changes in the selling prices received by producers for selected industries nationwide

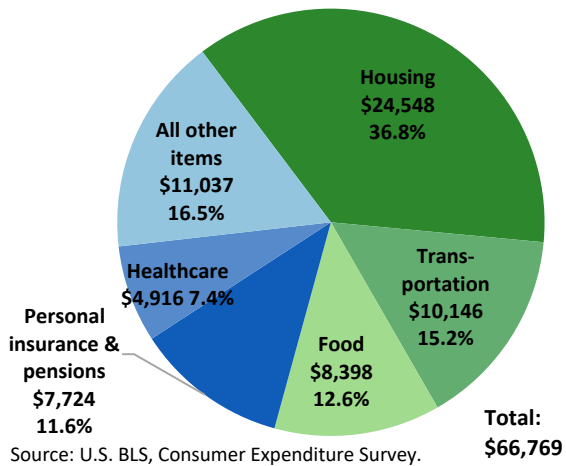
12-month percent changes in PPI



Source: U.S. BLS, Producer Price Index.

Average annual spending and percent distribution for selected categories

West average annual expenditures, 2020



Source: U.S. BLS, Consumer Expenditure Survey.

Average hourly wages for selected occupations

Occupation	Albuquerque area	United States
All occupations	\$25.63	\$28.01
Human resources managers	54.37	65.67
Registered nurses	38.25	39.78
Accountants and auditors	35.64	40.37
Construction laborers	16.88	21.22
Retail salespersons	14.34	15.35
Cooks, fast food	11.54	12.25

Source: U.S. BLS, Occupational Employment and Wage Statistics, May 2021.

Employer costs per hour worked for wages and selected employee benefits by geographic division

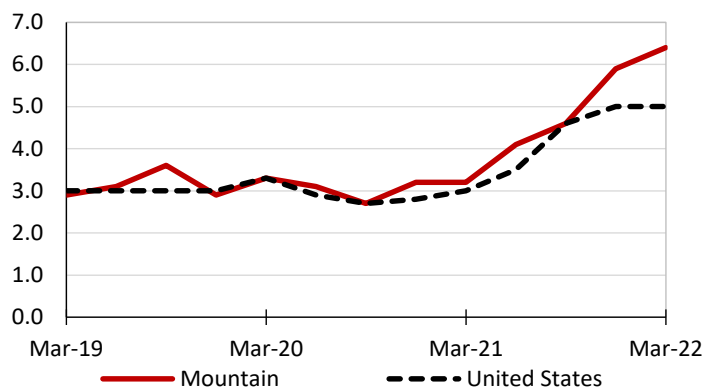
Private industry, December 2021	Mountain (1)	United States
Total compensation	\$34.98	\$38.07
Wages and salaries	24.71	26.86
Total benefits	10.26	11.22
Paid leave	2.47	2.85
Vacation	1.27	1.46
Supplemental pay	1.20	1.32
Insurance	2.80	2.87
Retirement and savings	1.15	1.32
Legally required benefits	2.64	2.86

(1) The states that compose the Mountain census division are: AZ, CO, ID, MT, NV, NM, UT, and WY.

Source: U.S. BLS, Employer Costs for Employee Compensation.

Over-the-year changes in wages and salaries

12-month percent changes in ECI



Source: U.S. BLS, Employment Cost Index.

